

The background of the entire page is a festive holiday scene. It features several brown cardboard gift boxes of various sizes, some wrapped in colorful, patterned paper. The gifts are adorned with red and white striped ribbons, holly leaves, and pine branches. The scene is set against a dark background with warm, out-of-focus bokeh lights in shades of yellow and orange, creating a cozy and celebratory atmosphere. In the top left corner, there are several yellow stars of varying sizes.

# FESTIVE FUNDRAISING IDEAS



Registered with  
**FUNDRAISING  
REGULATOR**



# Thank you for your support

New College Worcester (NCW) is the UK's only secondary school dedicated to supporting young people who are blind or vision impaired.

As a national, residential, non-maintained special school, we serve students aged 11-19 who are blind or visually impaired, many of whom also face additional challenges such as hearing impairments, physical disabilities, learning difficulties, or autism.

With over 150 years of history, NCW combines a strong tradition with a forward-thinking approach. We provide the highest standards of education and residential care within an inclusive, welcoming environment, empowering our students to develop independence and thrive. Our unique residential setting supports a "waking day" curriculum, where skills learned during the school day are reinforced and practiced in everyday life.

While the majority of our students' fees are funded by local authorities, covering education, residential care, and personalised support, NCW also relies on fundraising to meet the costs of general maintenance, refurbishments, equipment, vehicles, and extracurricular activities.

This festive season, we invite you to support the students of New College Worcester. Your generosity can help provide essential resources, from specialised equipment and technology to extracurricular activities that enrich our students' lives.

At NCW, we're dedicated to empowering young people with vision impairment, helping them to develop the independence and skills they need to succeed.

This festive season, your support can help us:

- Fund much-needed equipment and resources
- Maintain our campus and improve facilities
- Offer more extracurricular activities and experiences

Every donation, big or small, makes a meaningful impact on the lives of our students.

**Together, we can help our students shine brightly, not just this season, but every day.**

**Get involved today and be part of something truly special this festive season**

# There are lots of festive ways you can raise money for New College Worcester

Whether you want to hold a festive jumper day, a festive quiz or whip up a snowstorm with your seasonal bakes, every pound will make a difference.

So how do you go about organising your Christmas fundraiser?

1

## Plan your activity

Christmas is a hectic time of year and even the simplest activities need some preparation. Get started early to make sure your event goes smoothly and to give you time to plan how to raise the most money.

3

## Promotion

Once you've sorted out the details, think about how you'll get the most people involved and who can help you spread the word.

2

## Pick an idea

Just in case you need a bit of inspiration, we've put together our top suggestions in this guide.

4

## Pay in your money

Collect in your donations and total up the amount you have raised. For ways to pay in your donations please see the last page of this guide.

3

# Christmas Jumper Day

Get your best festive favourite out the wardrobe and have fun!  
Join in with our 2024 Christmas Jumper Day and help NCW continue to support young people aged 11 to 19 who are blind or vision impaired

Join us on **Friday 13 December** (you can also choose a different date to suit you if the 13th is not suitable) by putting on your best festive favourite knitwear (or t shirt, Christmas tie, Christmas hat, Christmas decoration.....)

.You could also take the opportunity to get into the festive spirit by holding a tombola, Christmas raffle or a Christmas cake sale, the pennies all do add up and all make a massive difference to the support we can give our students.

Whether you're in your office, school, group or at home, simply donate what you can (suggested £2) or collect from your colleagues and friends and let's raise as much money as we can this Christmas for NCW!

**DON'T FORGET**

To let us know if you are taking part, we would love to support your fundraising drop us an email to:  
[fundraising@ncw.co.uk](mailto:fundraising@ncw.co.uk)

4



# Christmas Bake Off

Whether it's chestnuts roasting on an open fire, mince pies, yule log, Christmas pudding, or other seasonal treats, selling homemade Christmas goodies can bring a lot of joy, but can also raise funds.

Your Christmas fundraising could make a huge difference to NCW.

Set up a stall outside your local shops, in the work place, a church service, or even at your local school Christmas event. Just make sure you get permission first. Now, get baking and enjoy some festive treats!

# Creative Christmas

Organise a crafty Christmas and sell seasonal trinkets made by you and your family and friends. This could be anything from handmade tree decorations to door wreaths or soft toys.

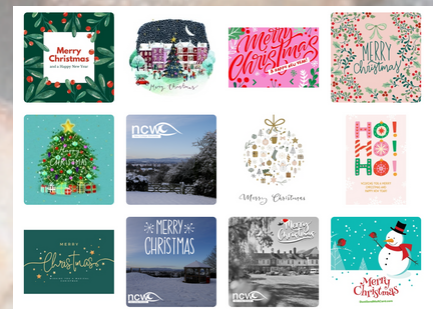
# Christmas Quiz

Whether you're a Christmas trivia expert or just up for some holiday cheer, a quiz is always fun for everyone! All proceeds from the quiz will go directly towards helping NCW provide essential resources, support, and activities for our students.

# E-Cards

We know that some people prefer to send their festive wishes online. Why not send an e-card this year while still supporting NCW!

Visit [www.dontsendmeacard.com](http://www.dontsendmeacard.com) and select New College Worcester



# Christmas Shopping

If you're shopping online and want to raise money, you can do so by shopping at Debenhams, Marks & Spencer, Argos, Dominos Pizza, Expedia and around 4,000 other online outlets, by going through Easy Fundraising or Give as You Live and selecting New College Worcester as your charity of choice. A donation will be made directly to us.

And don't forget to tell your friends, family and neighbours about this too.



 easyfundraising

 Give as you Live

# Christmas Crackers!

This couldn't be easier. Buy some crackers and insert a winning golden ticket into one of them. Ask for a donation for each cracker and donate the rest to NCW.

## Advent Challenge

Don't just buy an advent calendar, set yourself an advent challenge.

For each of the twelve days of Christmas, choose a different challenge, e.g. bake a cake, do a Santa fun run.

Create a fundraising page, share with your colleagues, family and friends and get them to sponsor each challenge and post on social media daily to get more sponsors.

The funds you raise will support our students who are blind or vision impaired.

6

Ready, steady, go!

# Christmas Charity Gift Donations

During Christmas, we embrace the spirit of giving and sharing. Giving a donation as a Christmas gift really does make a difference to NCW. It means we can continue to support our students or are blind or vision impaired now and in the future.

This year, why not explore the various ways you can make a meaningful Christmas donation to NCW.

## Paying in your donation & fundraising

### Online

Donations made directly to online fundraising pages are sent directly to us. You can also pay in any funds raised offline through our website - visit [www.ncw.co.uk](http://www.ncw.co.uk) and click donate.



SCAN HERE

### By cheque

Please send cheques, made payable to New College Worcester to:  
New College Worcester  
Fundraising  
Whittington Road  
Worcester WR5 2JX

6

### BACS payment

Donations can be made via BACS. Please get in-touch for our bank details.

### Cash

Where possible we would like to encourage the above donation paying in methods, however if you do have cash that you would like to give us then please contact us to arrange this.

**T: 01905 763933**

**E: [fundraising@ncw.co.uk](mailto:fundraising@ncw.co.uk)**

# Thank you for your support

At the most wonderful time of the year, your support mean more than ever.

Without support from the community NCW would not be able to continue to inspire, nurture and empower young people with a vision impairment.

MERRY  
*Christmas*

AND HAPPY NEW YEAR

For more information  
visit [www.ncw.co.uk](http://www.ncw.co.uk)

New College Worcester, Whittington Road, Worcester WR5 2JX.  
T: 01905 763933. E: [fundraising@ncw.co.uk](mailto:fundraising@ncw.co.uk) Registered charity number 1118377

